



Riverside Primary School

Drug, Alcohol and Tobacco Policy

September 2023

Contents

1. Introduction
2. Aims
3. Contents & Organisation of Drug Education
4. Managing Drug Related Incidents Procedure
5. Smoking Statement

This policy was written in consultation with staff, pupils, parents and governors.

1. Introduction

Riverside Primary School, recognises the harm that all drugs can have, whether they are illegal (cocaine, cannabis, heroin etc.) legal (alcohol, cigarettes and solvents) or medicines. We aim, through this policy, and it's guidelines to provide clear and consistent procedures, which promote safety and good management.

2. Aims

- To help young people resist drug misuse in order to achieve their full potential in society
- To promote and safeguard health and safety of pupils and staff within the school
- To endorse a range of learning and supportive responses for those involved in an incident (see safeguarding policy)
- To encourage an environment where a supportive response to incidents is not undermined by an unduly punitive response
- To ensure this policy is fully implemented and disseminated to ensure understanding and adopting for all of those connected with the school; pupils, parents, teachers, governors and support staff.

3. Contents & Organisation of Drug Education

- The school aims to provide a programme of drug education in line with Jigsaw, our PSHE education scheme of work and the Science Curriculum.
- The school will monitor in house effectiveness of teaching and learning through learning walks and book monitoring.

Jigsaw Content:

The grid below shows specific Drug and Alcohol Education learning objectives for each year group in the 'Healthy Me' puzzle.

Year group	Piece number and name	Learning Objectives 'Pupils will be able to...'
2	Piece 3 Medicine Safely	<ul style="list-style-type: none"> • understand how medicines work in my body and how important it is to use them safely • feel positive about caring for my body and keeping it healthy
3	Piece 3 What do I know about drugs?	<ul style="list-style-type: none"> • tell you my knowledge and attitude towards drugs identify how I feel towards drugs
4	Piece 3 Smoking	<ul style="list-style-type: none"> • understand the facts about smoking and its effects on health, and also some of the reasons some people start to smoke • can relate to feelings of shame and guilt and know how to act assertively to resist pressure from myself and others
	Piece 4 Alcohol	<ul style="list-style-type: none"> • understand the facts about alcohol and its effects on health, particularly the liver, and also some of the reasons some people drink alcohol • can relate to feelings of shame and guilt and know how to act assertively to resist pressure from myself and others
5	Piece 1 Smoking	<ul style="list-style-type: none"> • know the health risks of smoking and can tell you how tobacco affects the lungs, liver and heart • make an informed decision about whether or not I choose to smoke and know how to resist pressure
	Piece 2 Alcohol	<ul style="list-style-type: none"> • know some of the risks with misusing alcohol, including anti-social behaviour, and how it affects the liver and heart • make an informed decision about whether or not I choose to drink alcohol and know how to resist pressure
6	Piece 2 Drugs	<ul style="list-style-type: none"> • know about different types of drugs and their uses and their effects on the body particularly the liver and heart • be motivated to find ways to be happy and cope with life's situations without using drugs
	Piece 3 Alcohol	<ul style="list-style-type: none"> • evaluate when alcohol is being used responsibly, antisocially or being misused • tell you how I feel about using alcohol when I am older and my reasons for this

4. Managing Drug Related Incidents Procedure

Definition of 'Drugs':

This policy uses the definition that a drug is: 'A substance people take to change the way they feel, think or behave' (United Nations Office on Drugs and Crime). The term 'Drugs' includes:

- All illegal drugs
- All legal drugs including alcohol, tobacco and volatile substances which can be inhaled
- All over-the-counter and prescription medicines

Effective Drug and Alcohol Education can make a significant contribution to the development of the personal skills needed by pupils as they grow up. It also enables young people to make responsible and informed decisions about their health and well-being.

We will consider each situation individually and recognise that a variety of actions in response may be necessary to drug related incidents as recommended by: DFE and ACPO drug advice for schools: <https://www.gov.uk/government/publications/drugs-advice-for-schools>

If the situation leads to a medical emergency the school emergency first aid procedures will be followed immediately.

In the absence of a medical emergency the safe guarding lead will be informed and an appropriate response considered. We will refer to the DFE and ACPO drug advice for schools on responding to drug related incidents and in determining the response the implications of any action we take will be carefully considered. The focus of any response will be the student not the substance and we will seek to balance the interests of the individual, other members of the school community and the wider community.

Responses will be cross-referenced with related school policies such as:

- Behaviour
- Health and Safety
- Safeguarding
- School Visits
- PSHE

Unless there are exceptional circumstances we will inform parents /carers at the earliest opportunity so that we can work together to support the pupil and to resolve difficulties.

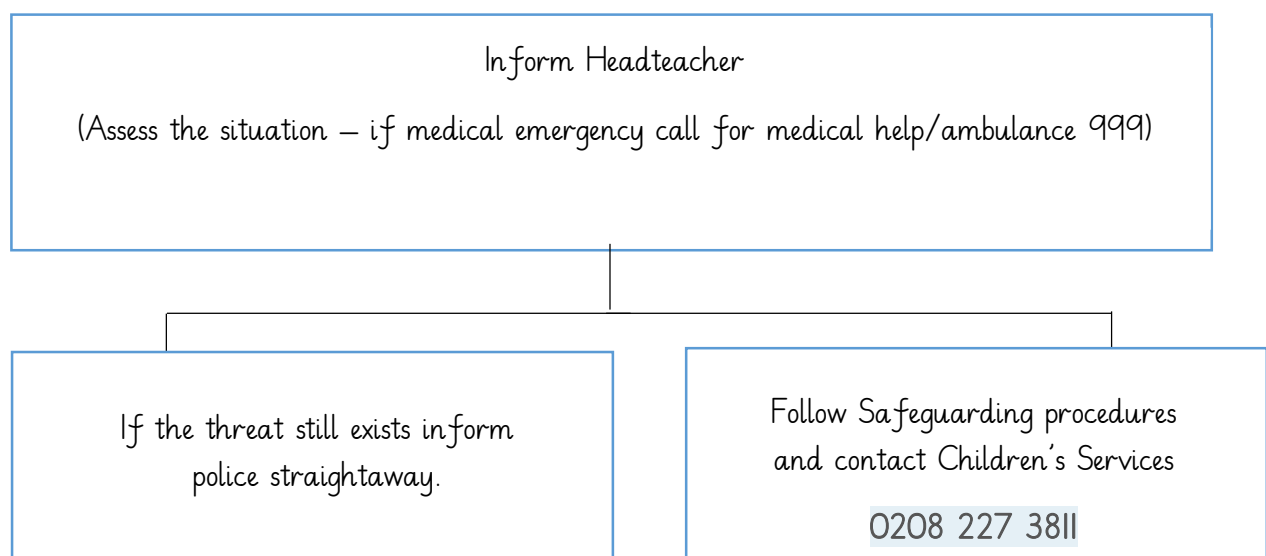
We have a range of professional colleagues who can give or obtain advice and support in drug or alcohol related situations. These include the school's Education Welfare Officer, the local Police Liaison Officer, our local Drug and Alcohol agencies, counselling services and our safeguarding lead. These colleagues can help with a needs assessment and support us in developing an appropriate response. The pupil/s will always be told when information is being passed on, in accordance with the school's policy on confidentiality.

Our aim is to enable all pupils to fulfil their potential. We will work with the pupil, their parents or carers and colleagues from other agencies to remove barriers to achievement and resolve any difficulties that exist. Drug related situations will be considered alongside other circumstances in the young person's life and not in isolation. We accept that it is never appropriate to respond in a way that is more punitive than that which might be considered by the police so that exclusion, whilst it remains an option, will be used as the very last resort.

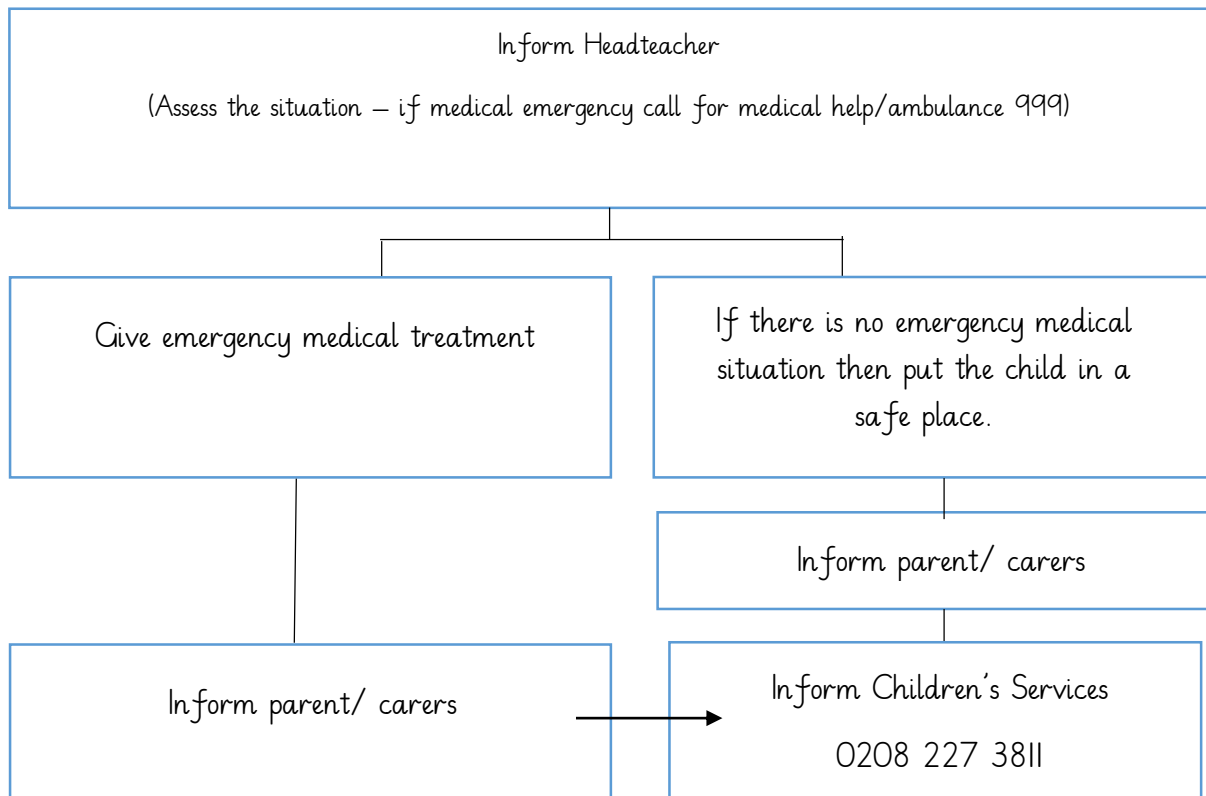
Should a substance suspected of being illicit be found on the school premises it will be handed to the Headteacher and, in the presence of another member of staff placed in a sealed container in the school safe until it can be delivered to or collected by a police officer. S/he will also be involved in advising the school on the most appropriate response to the situation. The Local Authority School Drug Adviser and Drug & Alcohol Action Team are also able to provide guidance and advice.

All staff will be made aware of the legal constraints on gathering evidence and questioning those involved. They will not take action without involving the coordinator.

Parents/Carers/Others under the influence of drugs /alcohol on school premises

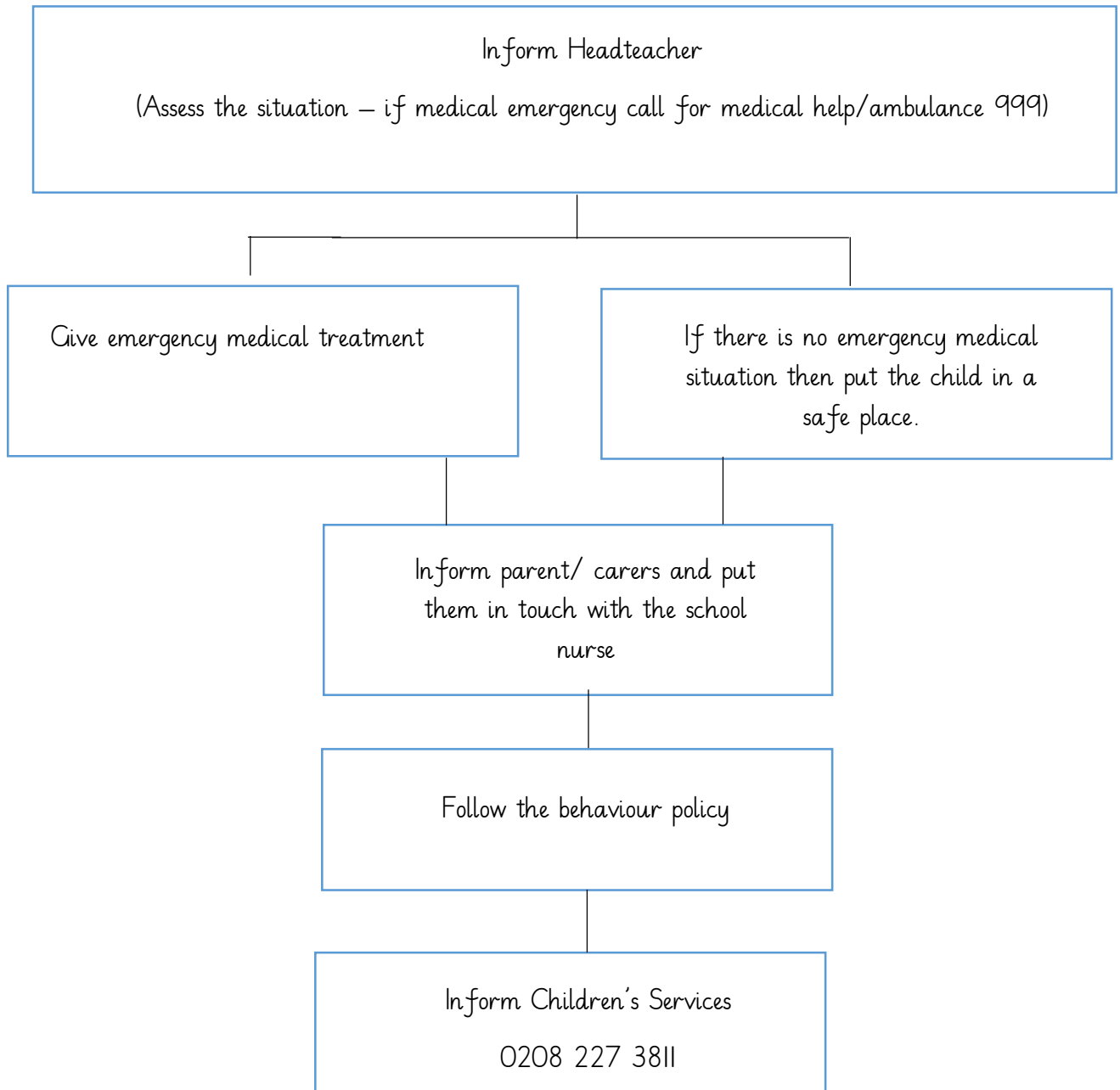


Pupil/s under the influence of drugs/alcohol on school premises



If tobacco is the drug being used follow the school behaviour policy.

Pupil/s using medicines inappropriately on school premises



Pupil makes a disclosure about their own parent, carers or others use of drugs/alcohol

Inform Headteacher/Designated safeguarding lead/ Deputy Designated Safeguarding lead

If you are suspicious that the law has been broken by an adult, contact the local community police

Follow safeguarding procedures and contact Children's Services
0208 227 3811

Drugs and/or paraphernalia found on pupils and/or school premises.

Inform Headteacher/Designated safeguarding lead/ Deputy Designated Safeguarding lead

Remove substance/paraphernalia ensuring that you handle safely as necessary

Place item/s in a container that is labelled with the date, time and signed.

Contact parent/carers

Contact local community police
for advice and disposal

Contact Children's Services
0208 227 3811

5. Smoking Statement

Smoking is not allowed on the school site. This includes the use of electronic cigarettes (vapes).